



Manual

In this short guide you find the most important technical details of this Yacht. Please read this manual before you start your trip, so you can follow your trip nice and smoothly.

Steering-gear

This motorboat has two steering-gears. You can use all time only one of them, inside **or** outside .

Attention: The lever at the steering-gear you are not using must be put into neutral position. (see photo's)

Dashboard:



- A- Tankmeter black water
- B- Tankmeter diesel oil
- C- Tankmeter drinking water
- D- Rudderangle
- E- Oil pressure
- F- Revolution counter
- G- Cooling water
- H- Joystick bow thruster
- I - Wiper
- J- Horn
- K- Voltagemeter
- L- Engine stop
- M- Hours
- N- Ignition key
- O- Voltagemeter
- P- Ignition Lamp
- Q- Heater

Starting the engine:

You can start the engine only inside the wheel-house. Be sure that the steering-gear outside is in neutral position (horizontal).

1. Put fuel/gear lever in neutral.
2. Press in the disconnection knopp from the lever, hold it and move the lever forward about 45°.
3. Turn the ignition key so that the control light is lighting (have a look at photo dashboard) and you will hear the acoustic alarm too.
4. Now turn the key further to the right. You have now started the electric starting motor. As soon as the engine starts, let go of the key. **Don't** turn back the key to the left!
5. Let the engine warm up for about 3-4 minutes, then place the gear lever in neutral position (see photo).



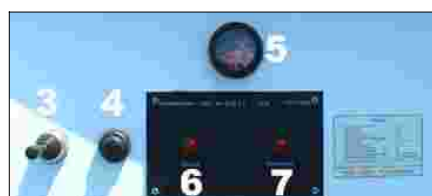
Inside steering-gear:

- 1 - Steering-gear (in neutral position)
- 2 - Disconnection knop



Outside steering-gear:

- 1 - steering-gear (in neutral position)
- 2 - 220 V quayside current
- 3 - Joystick bow thruster
- 4 - Horn
- 5 - Rudder angle
- 6 - Oilpressure control
- 7 - Coolwatertemp. control





During sailing:

Attention, during sailing supervise the radiator temperature, the oil pressure and the battery control regular.

When the motor is running the lights should not be on.

Warning !

* If the radiator temperature rises or if the oil pressure drops you must stop the engine immediately. You will hear the acoustic alarm too.

Stopping the engine:

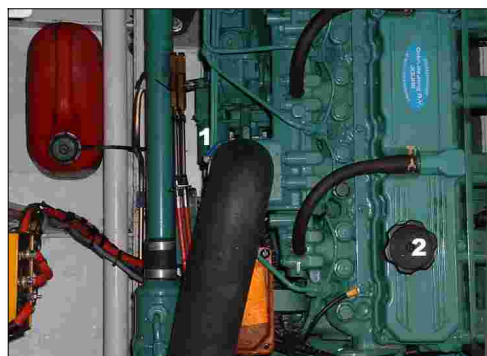
1. Reduce petrol (put throttle at neutral position)
2. Press in the stop switch and the engine will stop
3. Then turn the ignition key to the left.

Maintenance and Checks engine:

Yachtcharter Sneek stands surety for checking the technical details of the ship regularly. We check the water and petrol before and after renting the boat out.

We will ask you kindly to control the following two little, but very important checkpoints each day before sailing

Please check every morning before starting the engine the oil level and the cooling system.



Check oil level

The oil stick (1) is located on the portside of the motor (look at the photo). If the engine uses a bit of oil you can top it up (2) with the can of reserve oil which is on board.

If the motor uses a lot of lubricating oil (e.g. if the oil stick has gone down from max. to min. in one day) then please get in touch with us.

**Attention !
Do not open engine room when engine is running!**



Cooling system

Check the cooling system each day before beginning your journey

The radiator tank is located in a locker at the inside steering. When you open the locker, you will see the cooling water reservoir and the coolant level.

If the motor uses a bit of coolant then you can top it up. Please be sure that the tank is really closed after checking .

Bow thruster

To support you during the manoeuvre in the port the ship is equipped with a bow thrusters. The engine is operated electrically and requires no special attention on the way. If you start the engine, the bow thrusters is working.

You may use it both, inside and outside. If you press the Joystick to the left, the head of the ship moves to the left, press it to the right, moves the head to starboard.

Attention: The bow thrusters is not suitable for continuous operation. The engine is thermally secured and switches off with overload. The safety device needs some time, before you can use the thrusters again. Therefore only short, correcting intervals with manoeuvre use.

The main switch of the bow thrusters you will find in the under the bedding in the cabin in the forward part of the boat.



Steering Installation

Our boats require little effort to steer them – do not use excessive force in turning the steering wheel as you may damage the steering installation. The boat is provided with a propeller witch turn to the right, when reversing, the stern turns a little to the left.

Attention - Take care to ensure you not to damage the prop when reversing in shallow water.

Tanks

Before each departure we fill up the diesel- and water tanks.

Drinking-Water:

The filling cap for the water tank (blue) is located on the starboard-side of the boat. The tank holds 500 litres of drinking water. You can fill up in the yacht-harbours.

On the dashboard in the salon you will find the switch, which starts the pump for the drinking water. It may run all the time.

Motor Diesel:

The filling cap for Diesel is located in the stairs on the port-side of boat. The tank holds 400 litres of diesel. This is sufficient for at least 60 sailing hours.

Blackwatertank:

The cap (black) from the blackwatertank is located in the gangway on the starboard-side of the boat. Here you can pump the tank empty vacuum in a yachting port. In case of emergencies there also a pump is placed, so you can evacuate the tank on the way on big waters (forbidden by law since 01.01.2009). The switch for the pump you will find on the switch panel at the rear wall in the salon.

Gas Installation

The gas installation consists of copper pipe work from the main bow tank. The gas tanks are located in a special gas well in the gangway on the port-side. The main gas tap is located on the gas tank in the bow.

Switching Gas Tanks:

- In the bow gas well there are two gas tanks, one is connected and the other is a reserve and is full.
 - First, close the main tap on the tank.
 - The unscrew the nut on the tank to the right with the spanner (the thread is tightened to the left).
 - Switch over the pressure meter onto the new bottle.
 - Screw the nut to the left.
 - Then turn on the main tap on the tank..
-

Lighting the Cooking Unit:

The adjusting lever of the selected cook place of the gas digester turn, until you hear the gas leak out, then the button imprint. They can ignite the cook place with a match or a lighter now. Since the gas digester is equipped with a thermal safety device, you must hold the button still somewhat imprinted (about 5-10 seconds), otherwise expire the flame immediately again. If the flame should expire again, repeat the procedure. If you should not have a success, examine the stop valves and the gas bottle. If the gas bottle is empty, please change.

Please open a window during cooking, let op to get enough fresh air.

Refrigerator:

The refrigerator works with electrical energy. Temperature selector enables continuously variable interior temperature setting adapted to the food to be keep cool.

Warm air heating:

You will find the switch for the heating on the steering-wheel. For starting the warm air blower you have to the switch to the right side. Then you may select the desired temperature with the round rotary switch.



Toilet:

The toilet is simply and problem-free to serve. There is a change over switch (1), you can open and close the water pipe. With the pump (2) you may pump water from the outside to flush the WC.

1. The change (1) over switch in the left position, outboard water pipeline is opened.
2. Flush now with the pump (2) the WC (with the water you do not have to be economical, it's water from outside)
3. Now the change over switch (1) on the right position (look at the photo) and pump the WC empty..

Attention: Please do not use humid toilet-paper and don't throw sanitary towels, tampons, ... into the WC, otherwise it will be stopped up.



Electricity

The inside electrical supply is 12 Volt. Starting- and Lightning batteries are separated. The lamps, pumps and the refrigerator are working with 12 Volt. In Yachtharbours it's possible to supply the boat with 220 Volts. The power-point you will find at the sitting area outside, an extension cord is on board too.

Main switches Lightning/Engine:

In the engine room you will find the main switches for the 12 Volts system (1) and the engine (2). This switches are normally all time "on".

Quayside current:

Please use the electrical power cable for quayside current carefully, avoid contact with water. Plug in first onboard (steering-gear outside) and then into the power-point in the harbour. If you leave the harbour, please do it the other way round..

Charger

Please switch on the charger (7) if the boat is supplied by quayside current.



Switches in Salon:

- 1 - Engine room lamp
- 2 - Navigation lights
- 3 - Anchor light
- 4 - Drinking water pump
- 5 - Blackwater pump
- 6 - Bow thrusters
- 7 - Charger
- 8 - Potentiometer

Yachtcharter Sneek • Jan Kuipersweg 5-7 • 8606 KD Sneek • fon: 0031-(0)515-438383 • fax: 0031-(0)515-438808

Motor yacht Charter in Friesland Netherlands, ca. 30 Cruiser and Motorboats for 2-10 Persons to rent from Sneek, driving courses for beginner, routes starting from Sneek, for a beautiful boat vacation in Friesland lie on board the ships. Low ships = large driving area in Holland. Family-friendly rents, senior discount, own threu, large final parking lot, good service ...